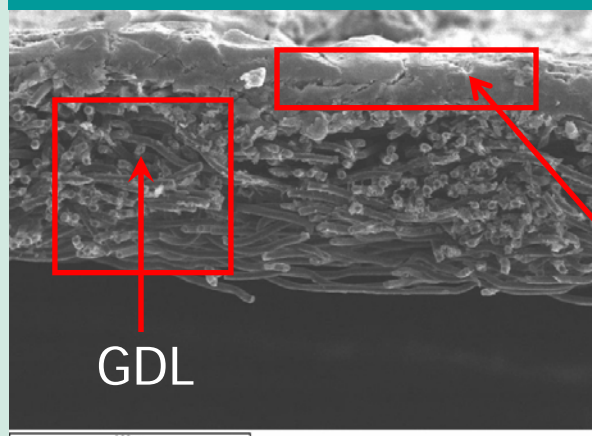


SEM Coating Comparison of GDEs

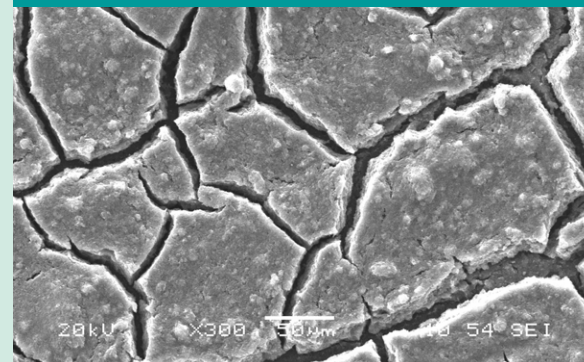
Side View of GDE



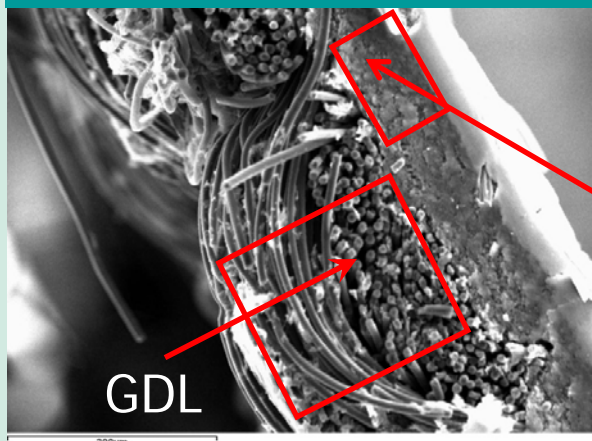
**Hand
Painted**

CL thickness:
ca. 30–100µm
Platinum catalyst

Top View of Catalyst Coating



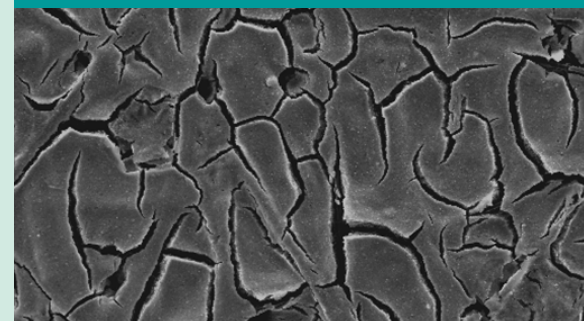
Side View of GDE



Commercial
Screen Printed

CL thickness: 40µm
Platinum catalyst

Top View of Catalyst Coating



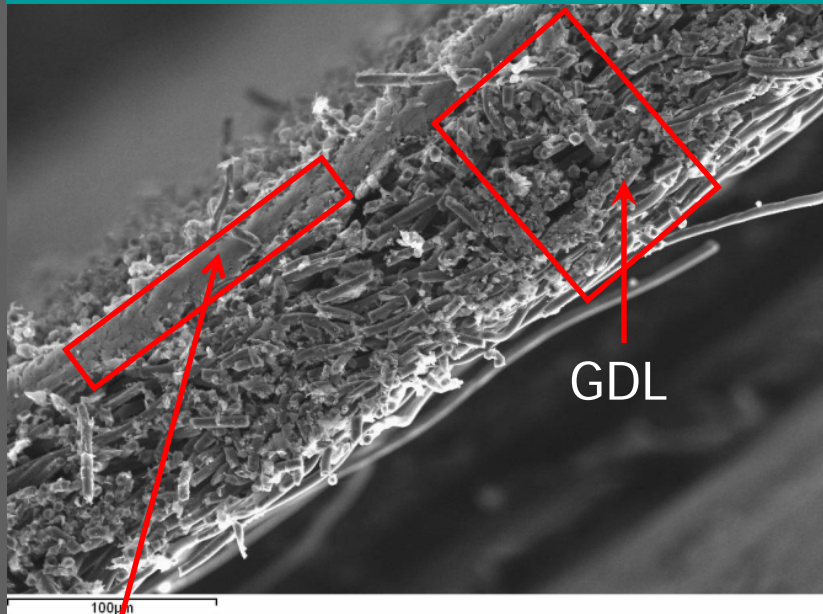
**UNIVERSITY OF
BIRMINGHAM**

PEM FUEL CELL RESEARCH GROUP

www.polletrerearch.com

SEM – Ultrasonic Spraying Method

Side View of GDE



CL: 30µm thickness
Platinum catalyst

Top View of PT Catalyst Coating

